

INSPIRE™ Exam Room Collection

STANDARD FEATURES

- Modular Vinyl Foil (3DL) Shaker Style door with dowel and glue construction
- Postform non-drip countertop, sink and faucet included
- 4" satin finish wire pulls included
- Self-closing drawer slides and 3-way 110° Euro hinges
- Neutral white TFL interiors
- All cabinets have (1-2) adjustable shelves based on size (except sink units)



Let our Design Team work with you to create the perfect workspace.



DOOR STYLES



Classic

Elegante

BASE CABINETS

LBS101 | LBS102 **LBS103 | LBS104** **LBS105 | LBS106** **LB107**

LBS120 **LBS162 | LBS163** **LB140** **LB180 | LB181**

LB170 **LBS171** **LBS172** **LBS173**

WALL CABINETS

LWS101 | LWS102 **LWS110**

LWS120 | LWS121 **LWS130 | LWS131**

WARDROBE

LHS120 | LHS121

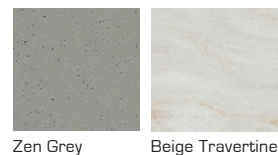
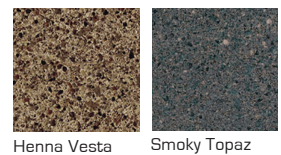
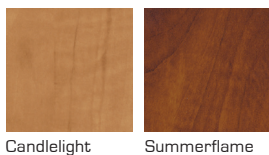
STANDARD (3DL) CABINET COLORS



STANDARD COUNTERTOP COLORS



(UPGRADE) SOLID SURFACE COUNTERTOP COLORS



Additional colors are available upon request.

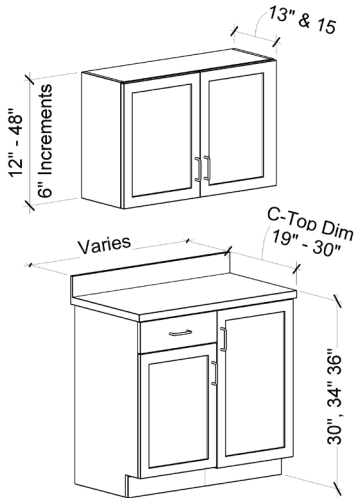
Other door | drawer combinations and cabinet sizes are available upon request. Call toll free for more information: 877-302-7755.

See back side for typical groupings.

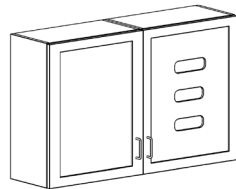
INSPIRE™ Exam Room Collection

TYPICAL GROUPINGS

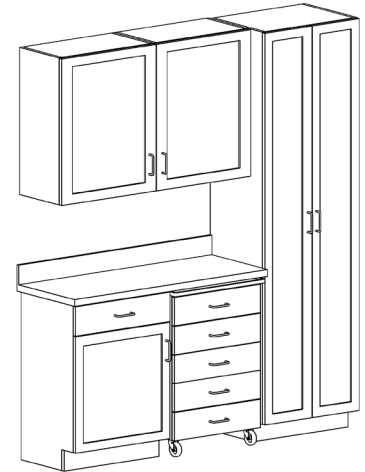
Refer to customer service for further clarification on dimensions.



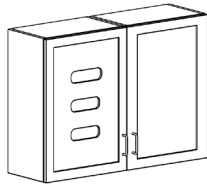
GROUP A



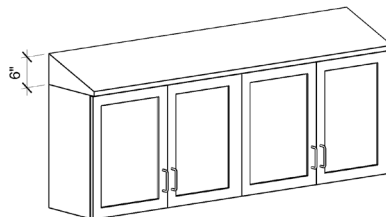
GROUP B



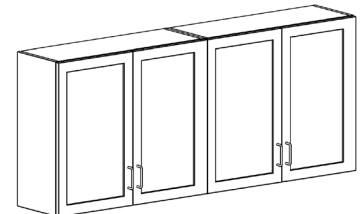
GROUP C



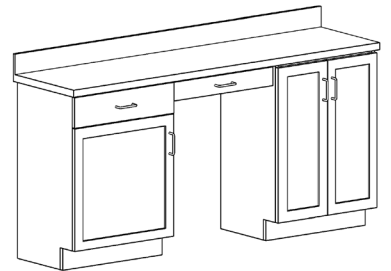
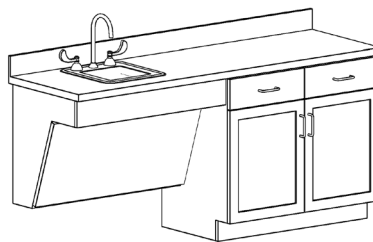
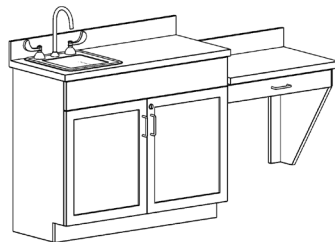
GROUP D



GROUP E



GROUP F



If single door cabinet, you must specify door hinge "R" (Right) or "L" (Left). Visit our website at www.cooperworksind.com to see a complete list of our product offerings and download our full catalog, or call us toll free at 877-302-7755.